

MELBOURNE'S HOUSING CRISIS

REALITY OF HOMELESSNESS

A shortage of housing and a lack of affordable accommodation has led to Melbourne's worst housing crisis to date.

#Homelessness is not 'rooflessness'

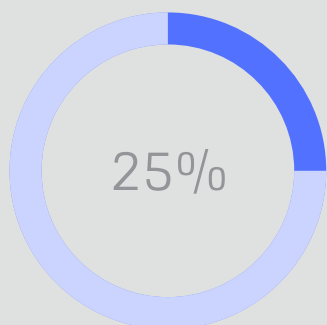
A home means security, stability, privacy, safety, and being able to control your space - CHP



**24,828 PEOPLE
WERE
EXPERIENCING
HOMELESSNESS IN
VICTORIA ON
CENSUS NIGHT
2016,**

**14% INCREASE
SINCE 2011**

**"44% were LIVING
in overcrowded
CONDITIONS"**



**1 IN 4 PEOPLE
EXPERIENCING
HOMELESSNESS IN
VICTORIA WERE
AGED 12 - 24 YEARS**

HOMELESSNESS

WHAT DOES THE DATA TELL US

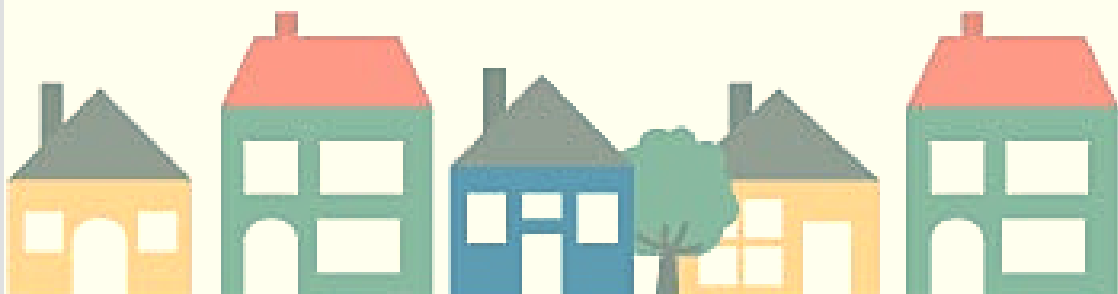
Homelessness affects many people and does not discriminate between ages, genders or cultures. In Australia homelessness is primarily caused by our housing crisis. Family violence, poverty and mental health are major contributing factors to homelessness, however people remain homeless due to a lack of affordable housing.

**2016 CENSUS DATA REVEALED VICTORIA'S HOMELESSNESS
POPULATION REPRESENTS**

20%

of Australian's experiencing homelessness

The 2016 census count found that Australia had a 14% increase of those experiencing homelessness. Victoria saw an increase to its homelessness population with a total of 24828 people identifying as homeless. In line with National trends, Victoria saw a rise in people living in severe overcrowding conditions with 44% of Victorian's experiencing housing crisis representing this group.



42%

Of Victorians
are homeless
due to
domestic and
family violence

affordable housing

demand and no supply

A common misconception assumes that homelessness affects only those who “choose” to be homeless. Little thought is placed on why people find themselves experiencing homelessness or their lack of options to end their experience. The last decade has seen a significant shift to the access of affordable accommodation with 500 new applications for government housing being submitted monthly.

39%

Of Victorians
are homeless
due
to financial
hardship



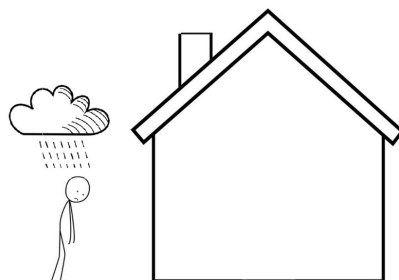
82,000

people on the public housing waiting list

What was once an affordable housing option for low income earners, private rental has become unaffordable due to a lack of supply and a highly competitive rental market. Anglicare Australia's 2018 Rental Affordability Snapshot found that nationally only 6% of rental properties are affordable for low income earners. It concluded that single parents accessing the rental market find themselves in the same situation as those on government income support. The Snapshot also found that just 1% of properties were affordable for single people on the Aged Pension.

39%

Of Victorians
are homeless
due
to housing
crisis



94% of rental properties are unaffordable for low income earners

WOULD YOU SPEND \$700 A WEEK FOR THIS?

COST



Emergency accommodation can cost up to \$700 a week. Families often contribute to these costs, paying more than double what they would in private rental.

"It was the last time he was going to hurt me and the kids.. I left but had not family or friends. I was grateful for the help but the room was small, dirty and small...I would have paid less then that for a three bedroom private rental - Rachael

HEALTH



Families in emergency accommodation have no cooking facilities and often rely on take away adding to the daily costs of being homeless..

"Everyday I spend 30, 40, 50 dollars on take away, I cant afford this, my children are not getting healthy food because I have no where to cook for them" - Fatma

SELF-WORTH



Many people who are placed in crisis accommodation report that they have experienced bed bugs and they have had cockroaches in their room.

"I had been sleeping in my car for two weeks, all I wanted was a bed to sleep in and somewhere to showed. I spent one night in crisis accommodation and got bed bugs... I left the next day... I'm homeless but I have self respect - James



**1 IN 3
PEOPLE**

were turned away from homelessness services in 2017 due to a lack of resources

COST OF HOMELESSNESS

- 30% of people experiencing homelessness are employed" (ABS, Census 2016) ●

Across Melbourne's North and West suburbs, homelessness services spent \$4.5 million dollars on emergency accommodation to assist families' experiencing homelessness. These families are often accommodated away from their supports such as friends, family, and schools due to limited options, with often substandard, highly priced, privatised motel rooms their only option.

Due to high rental costs, many residing in private rental often access support services for emergency relief assistance, many access food support, assistance to pay bills and material aid such as clothing. Many people find themselves paying excessively rent with no options to find something cheaper. The financial burden of renting in a high demand market limits people's capacity for financial independence resulting in increased demand on services.


"The hardest thing about renting is having to decide between food on the table or a roof over our heads" - Sarah



**57% of people
are living in
severely
overcrowded
conditions"**

CITY OF MELTON

What's happening in
your neighbourhood?



Melbourne's west has
seen a dramatic increase
of homelessness in the
five years between the
2011 census and the 2016
census.

INCREASE
IN THE
NUMBER
OF PEOPLE
HOMELESS
ON CENSUS
NIGHT
2016

40%

In Melbourne's West over
five and a half thousand
households were
homeless during the 2016
census night. This figure
does not include families
and individuals
experiencing
homelessness who were
not counted during the
census.

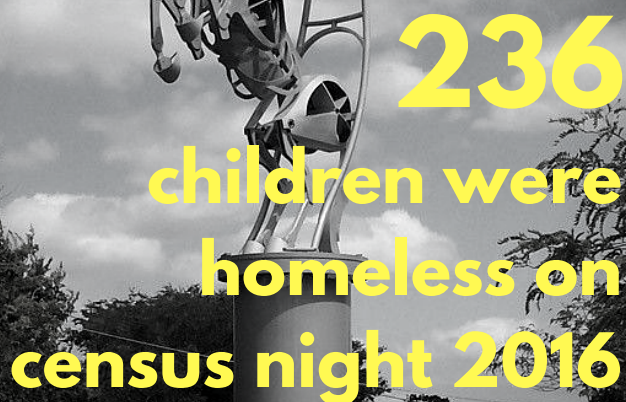
During the month
of March 2018,
households **832**
were awaiting
urgent homelessness
assistance in Melbourne's
west.

Melton saw a **25%**
increase of
community members
experiencing
homelessness. Of the 1014
people who were
experiencing housing
crisis in Melton, during the
2016 count, 236 of those
were children aged 12
years and under.

11% of people living in
caravan parks, highlighting
the growing trend of
unaffordable housing.

Of those experiencing
housing crisis, a further
57% of people residing in
Melton are living in
severely overcrowded
conditions.

**"1 in 5 people
experiencing
homelessness were aged
12 years and under"**



**236
children were
homeless on
census night 2016**

"Affordability rentals in Melton are so hard to find... the caravan park is
not a permanent home" - Susan, Melton Resident

PRIORITISE HOUSING

Melbourne's housing crisis can be contributed to a lack of Government support to address housing and homelessness. Investment in housing development has resulted in a reduced amount of government housing development and those hit hardest are on low incomes. While the number of available rental properties is increasing, there is a decline in the number of affordable rental properties in Melbourne, with the median weekly rental amount being \$420 per week.

The federal government invests 1.7 billion dollars annually into public housing, social housing and homelessness support services whereas \$14 billion is lost in tax concessions to support home owners through capital gains tax and negative gearing.

“Billions of dollars more of public funding goes towards supporting housing investors, rather than ensuring everybody, including people on low incomes, have a home” Anglicare Australia

“Without sufficient affordable housing, we are fighting an uphill battle to end homelessness, because people are forced to cycle through rooming houses, crisis beds and other temporary accommodation”

- Jenny Smith, CEO,
Council to Homeless
Persons

WHAT WE CAN DO

OFFICIAL NOTE

Temporary emergency accommodation is not a housing solution to end homelessness. It is a band-aid to someone being “homeless tonight” but does not provide any permanency. A housing first model needs to be adapted to address key factors of homelessness and our Government must invest in social and public housing.

We need timely innovative solutions that create safe emergency accommodation options as soon as possible, while acknowledging the need for long term housing supply. If we do not address the bigger issues of housing supply and affordability in Melbourne, we will find that more and more people will be forced to sleep in cars and on our streets.

MORE HOUSES FOR PEOPLE

We need immediate and comprehensive solutions to increase our housing supply

- Inclusionary zoning legislation to require that 20% of any new developments be allocated to people awaiting social housing
- Innovative approaches to the development of 'tiny houses' that can be built sustainably, erected quickly and that provide safe, self contained accommodation
- A monumental boost to public and social housing



Show your support online by signing the
'More Houses for People' petition

<https://chn.ge/2LQulZm>

Get involved

Ring, email or write to your local member of parliament

Show support and put pen to paper and sign a petition

Acknowledge that when you pass someone living on the street or in their car, that they are there because we don't have enough affordable housing

North and West Homelessness Network

This is a Network of 50 Specialist Homelessness and Family Violence Organisations, operating 200 homelessness programs in Melbourne's North and West.

These services that provide the key response to vulnerable individuals and families who are experiencing homelessness in Melbourne's north and west are seeing ever increasing numbers of individuals and families who are unable to find a place to live.

The North and West Homelessness Network would also like to acknowledge the following publications;

Anglicare Australia, Rental Affordability Snapshot 2018
Council to Homeless Persons, Everybody's Home campaign
Australian Bureau of Statistics, 2011 & 2016 census data
Australian Institute of Health and Welfare

COUNCIL TO HOMELESS PERSONS

Everybody's Home campaign

- Support for first home-buyers, by setting the tax system to make it fairer for ordinary Australians wanting to buy a home.
- Develop a National Housing strategy to meet Australia's identified shortfall of 500,000 social and affordable rental homes.
- A better deal for renters, by changing the tenancy laws to protect tenants against evictions, unfair rent rises, discrimination and landlords who refuse to maintain properties.
- Immediate relief for Australians in chronic rental stress, by increasing Commonwealth Rent Assistance.
- A plan to end homelessness, to halve homelessness in five years and end it in 10.



Sign the petition at;

<http://everybodyshome.com.au/petition/>